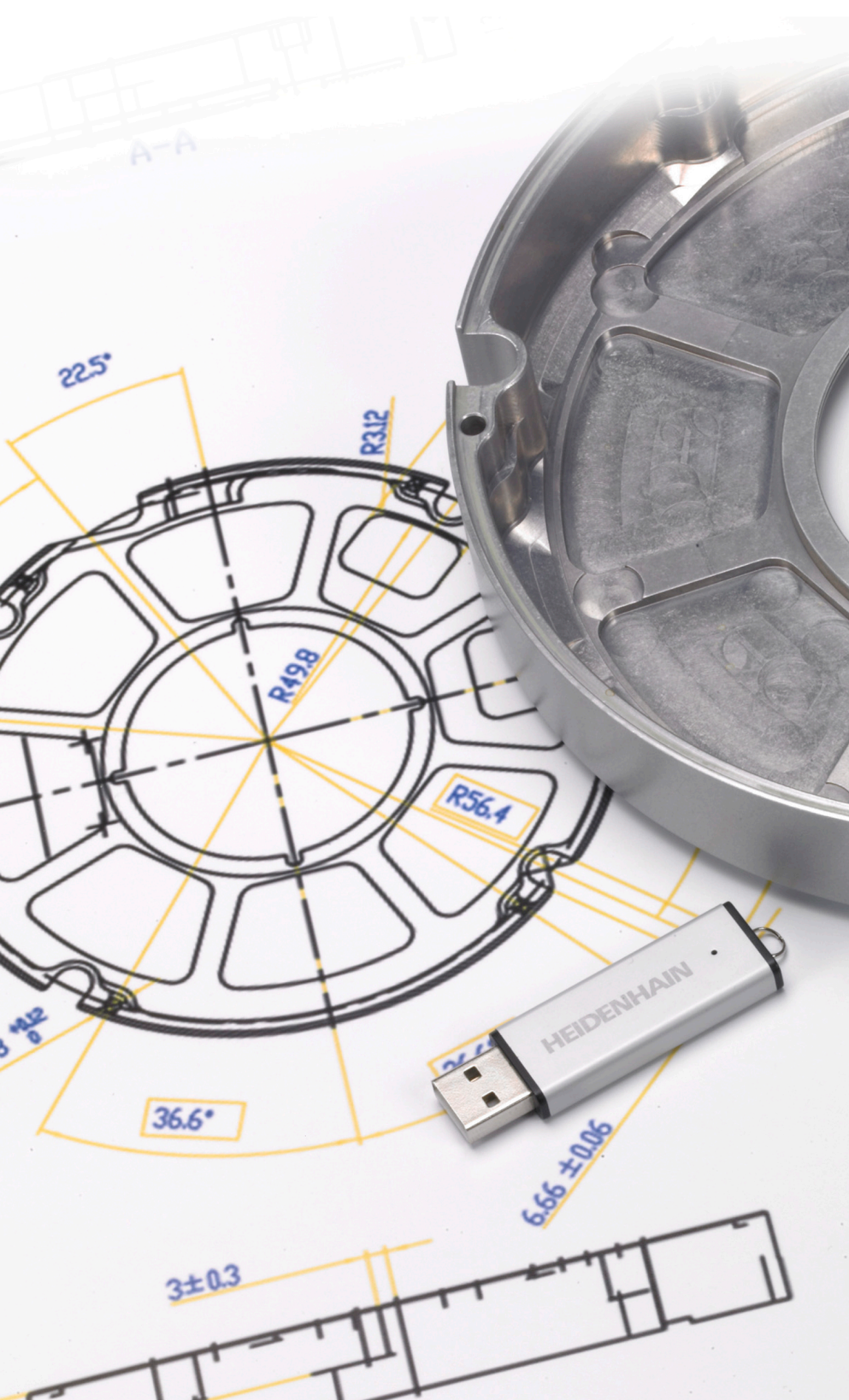




HEIDENHAIN



NC Solutions

Set di disegni 13004

Italiano (it)
6/2018

1 Set_disegni_13004

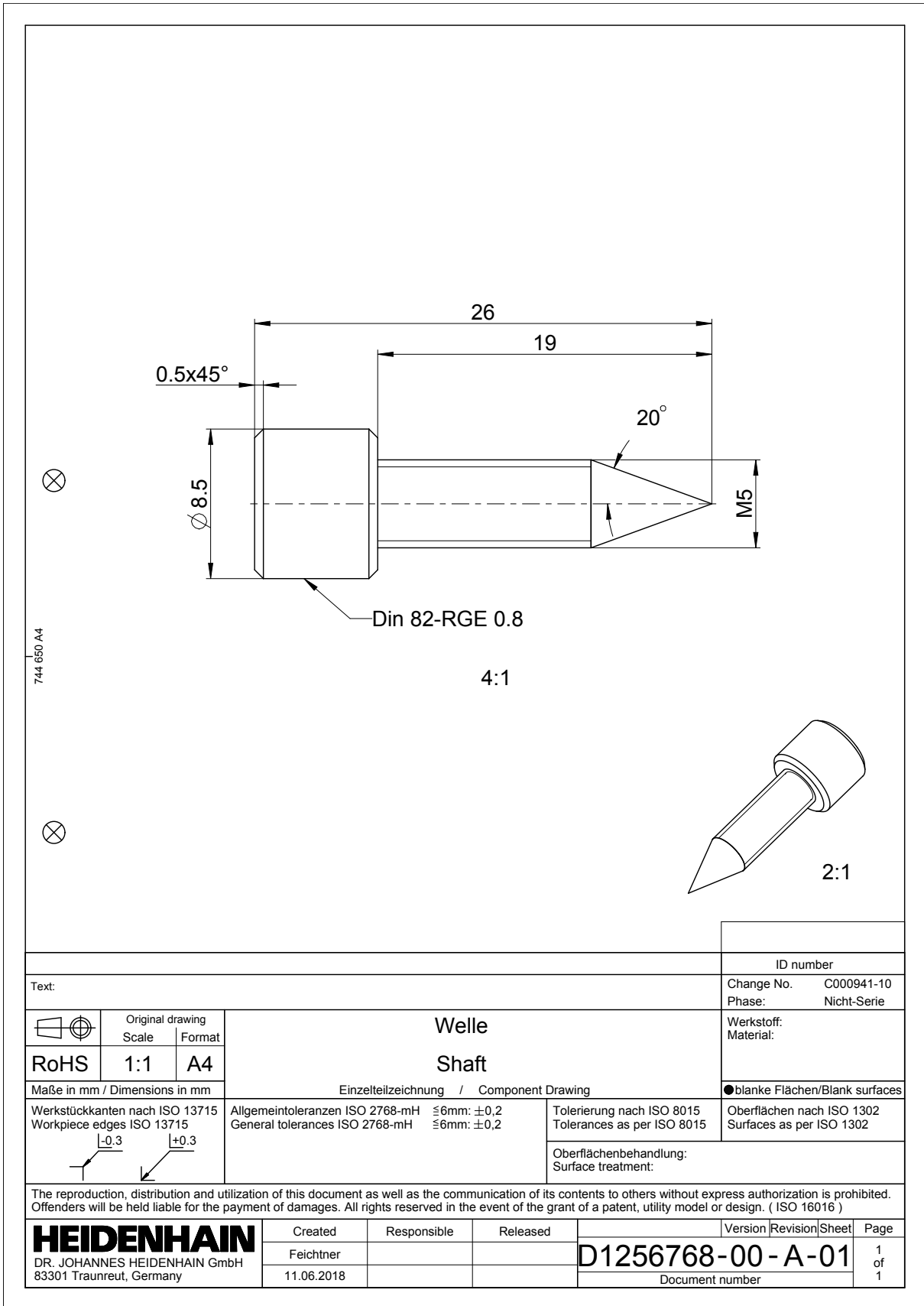
Distinta pezzi motore per aria compressa

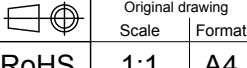
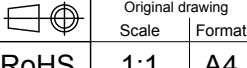
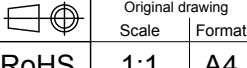
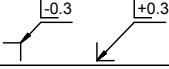
Pezzi di produzione

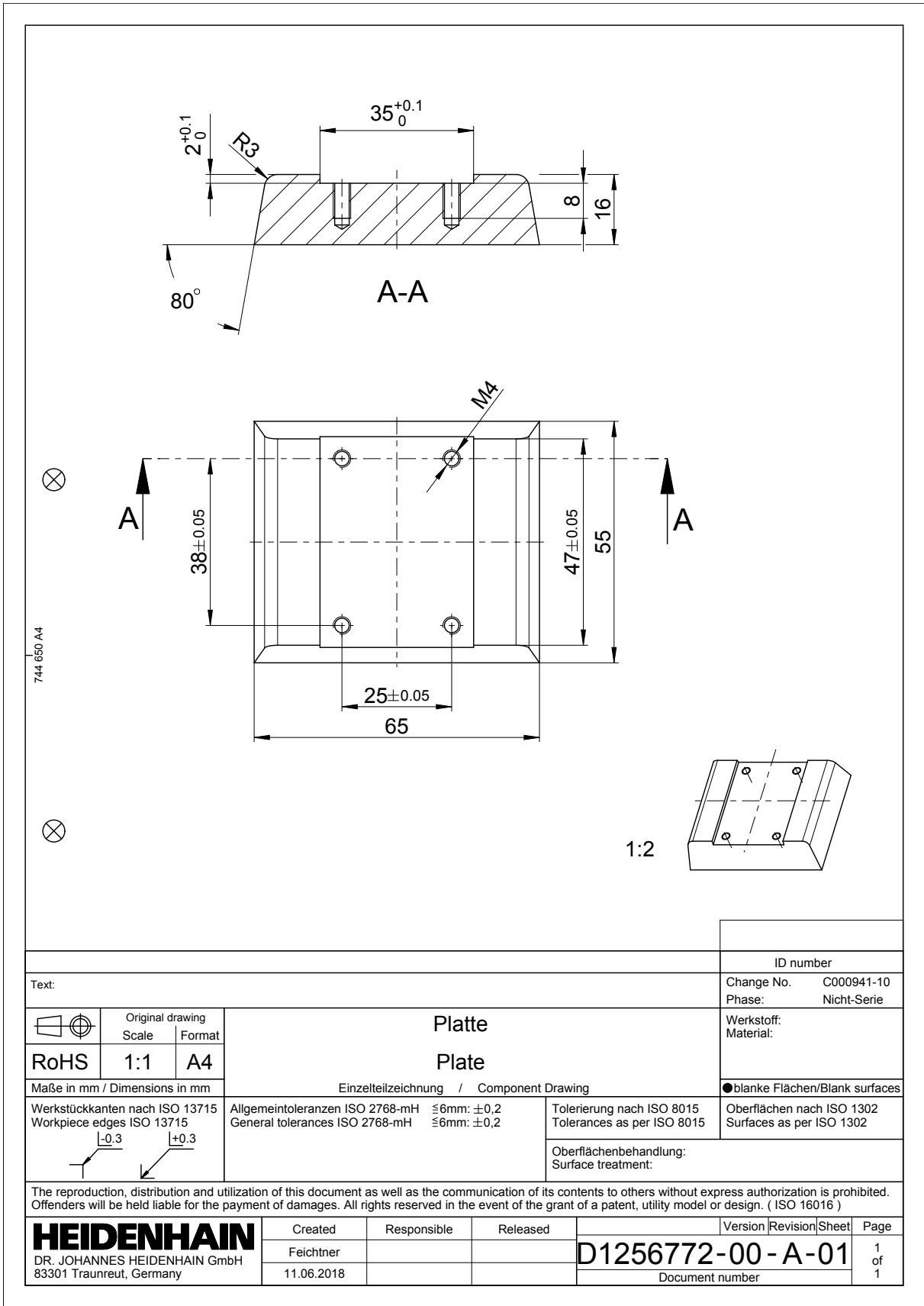
| Numero | Denominazione | Materiale da lavorare | Numero documento |
|--------|---------------|-----------------------|------------------|
| 1 | Albero | CW508L | D1256768-00 |
| 1 | Piastra | ENAW 2007 | D1256772-00 |
| 1 | Pistone | CW508L | D1256799-00 |
| 1 | Rosetta | CW508L | D1256806-00 |
| 1 | Albero | CW508L | D1256807-00 |
| 1 | Piastra | ENAW 2007 | D1256809-00 |
| 1 | Corpo | PMMA | D1256812-00 |
| 1 | Piastra | ENAW 2007 | D1256815-00 |
| 1 | Rosetta | CW508L | D1256823-00 |
| 1 | Albero | CW508L | D1256826-00 |
| 1 | Coperchio | PMMA | D1256827-00 |

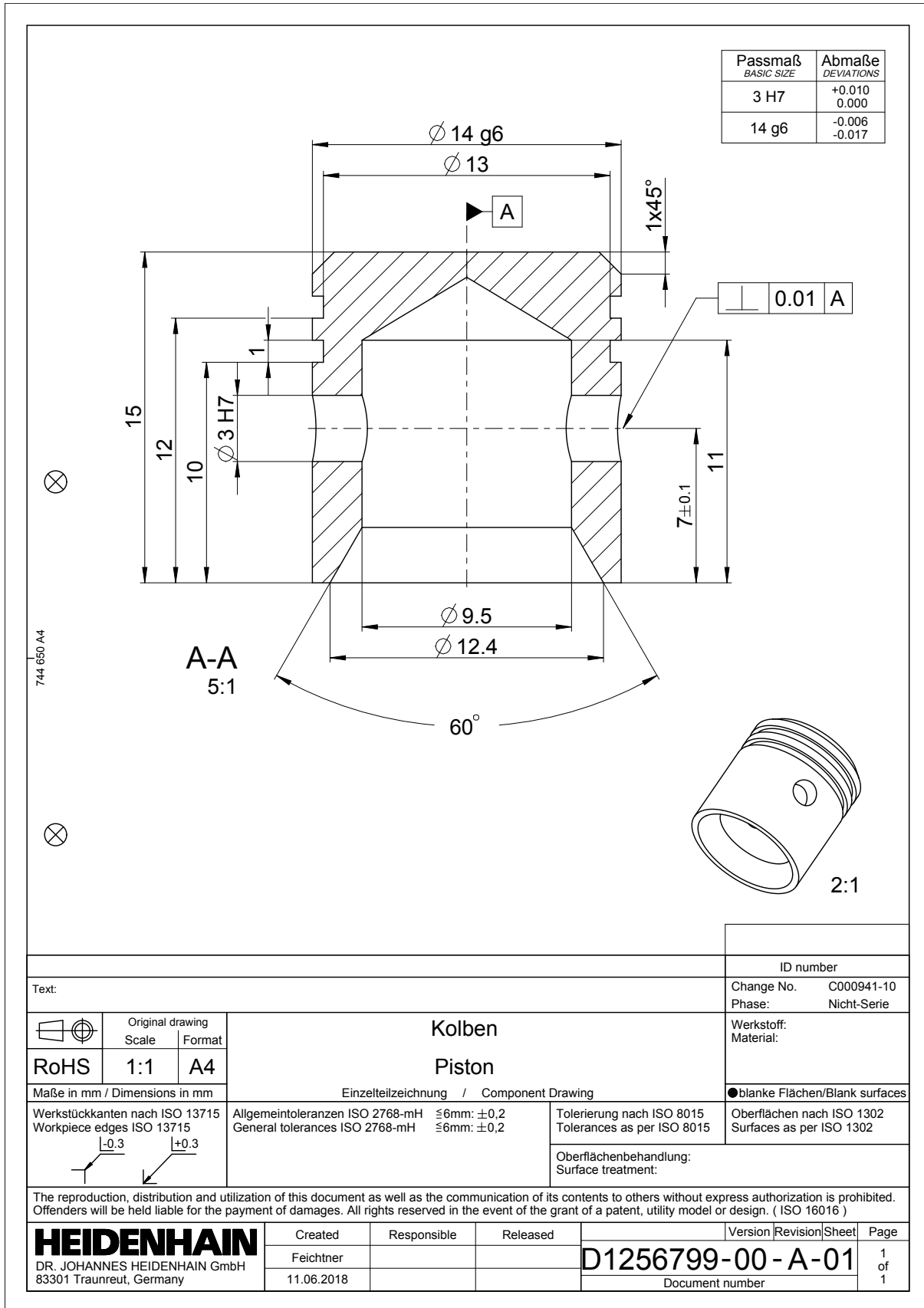
Pezzi standard

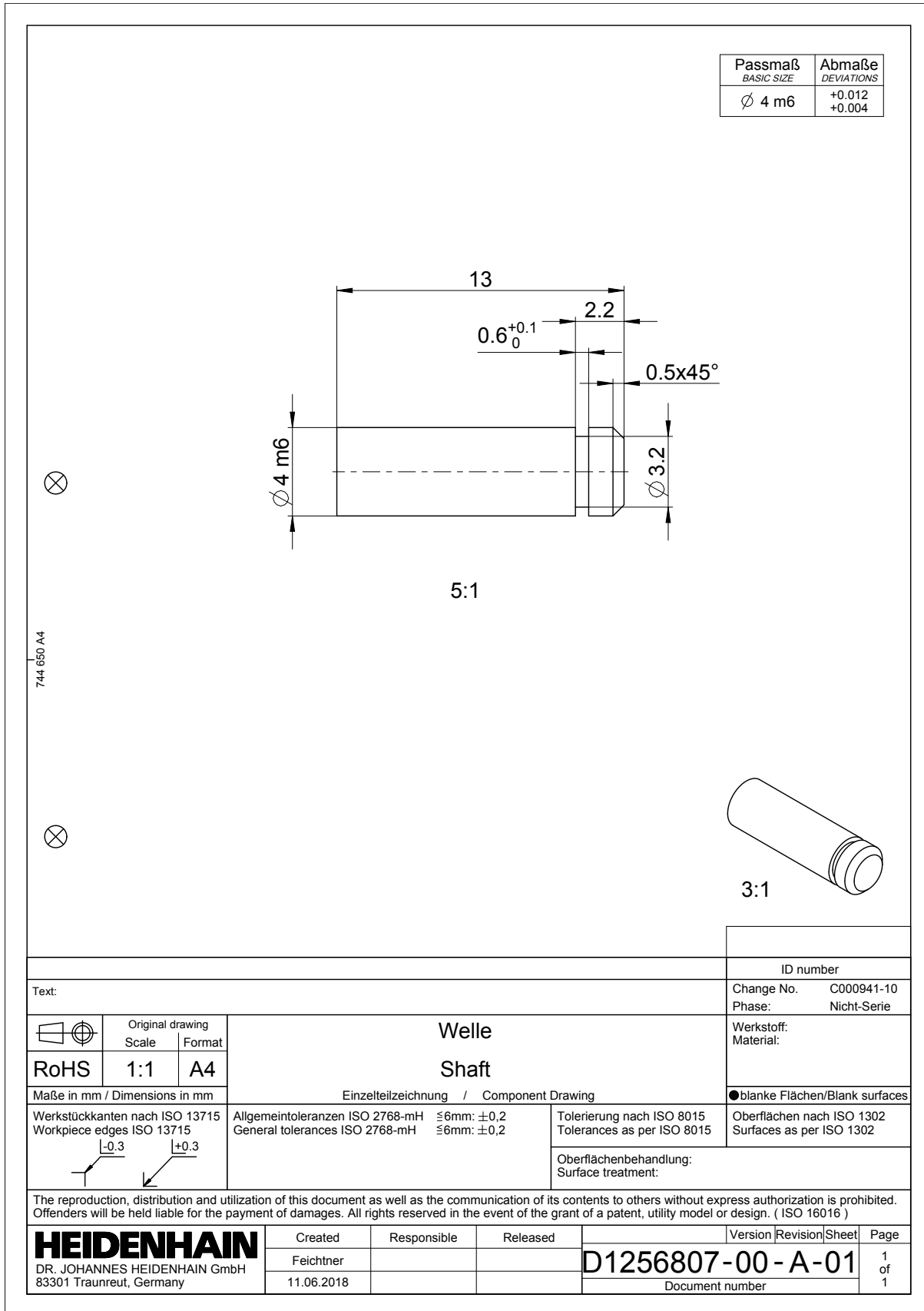
| Numero | Denominazione | Norma | Descrizione |
|--------|------------------------------|-------------------|-------------------------------------|
| 2 | Vite cilindrica M4 x 18 | DIN EN ISO 4762 | Esagono cavo |
| 4 | Vite cilindrica M4 x 6 | DIN EN ISO 4762 | Esagono cavo |
| 4 | Vite a testa svasata M3 x 8 | DIN EN ISO 7046-1 | Esagono cavo |
| 2 | Perno filettato M4 x 6 | DIN EN 27434 | Con punta |
| 1 | Perno cilindrico Ø3 x 12 mm | DIN EN ISO 8734 | |
| 1 | Rosetta di sicurezza Ø 3,2 | DIN 6799-3,2 | |
| 1 | Sigillante (ad es. silicone) | | Scanalatura di tenuta per basamento |

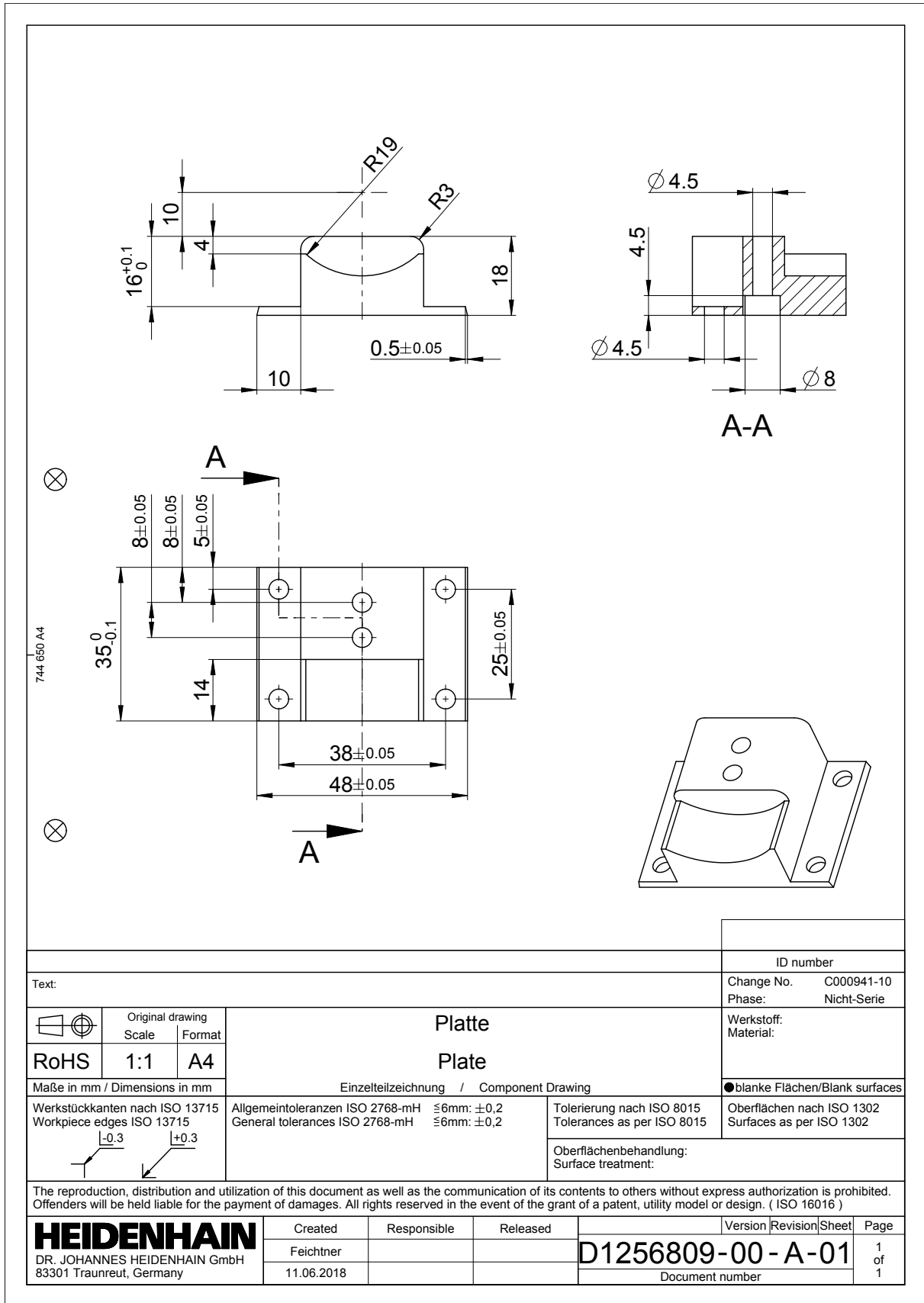


| | | | | | | | | | | | | | | | | | | | | | | |
|---|---|------------------------------|-------------------------------|---|--|----------|-------|------|-----------|--|--|-------------------------|--|---|---|------------|--|--|-----------------|--|--|--|
| ID number | | | | | | | | | | | | | | | | | | | | | | |
| Text: | | | | | | | | | | | | | | | | | | | | | | |
| <table border="1" style="width: 100%; border-collapse: collapse;"> <tr> <td style="text-align: center;">  </td> <td style="text-align: center; vertical-align: middle;"> Welle Shaft </td> </tr> <tr> <td style="text-align: center;"> Maße in mm / Dimensions in mm </td> <td style="text-align: center;"> Einzelteilzeichnung / Component Drawing </td> </tr> </table> |  | Welle Shaft | Maße in mm / Dimensions in mm | Einzelteilzeichnung / Component Drawing | Change No. C000941-10 Phase: Nicht-Serie Werkstoff: Material: | | | | | | | | | | | | | | | | | |
|  | Welle Shaft | | | | | | | | | | | | | | | | | | | | | |
| Maße in mm / Dimensions in mm | Einzelteilzeichnung / Component Drawing | | | | | | | | | | | | | | | | | | | | | |
| Werkstückkanten nach ISO 13715 Workpiece edges ISO 13715  | Allgemeintoleranzen ISO 2768-mH ≤6mm: ±0,2 General tolerances ISO 2768-mH ≤6mm: ±0,2 | | | | | | | | | | | | | | | | | | | | | |
| Tolerierung nach ISO 8015 Tolerances as per ISO 8015 Oberflächenbehandlung: Surface treatment: | | | | | | | | | | | | | | | | | | | | | | |
| Oberflächen nach ISO 1302 Surfaces as per ISO 1302 | | | | | | | | | | | | | | | | | | | | | | |
| The reproduction, distribution and utilization of this document as well as the communication of its contents to others without express authorization is prohibited. Offenders will be held liable for the payment of damages. All rights reserved in the event of the grant of a patent, utility model or design. (ISO 16016) | | | | | | | | | | | | | | | | | | | | | | |
| HEIDENHAIN DR. JOHANNES HEIDENHAIN GmbH 83301 Traunreut, Germany | <table border="1" style="width: 100%; border-collapse: collapse;"> <tr> <td>Created</td> <td>Responsible</td> <td>Released</td> <td>Version</td> <td>Revision</td> <td>Sheet</td> <td>Page</td> </tr> <tr> <td>Feichtner</td> <td></td> <td></td> <td colspan="2" style="font-size: 1.2em;">D1256768-00-A-01</td> <td>1</td> <td>1</td> </tr> <tr> <td>11.06.2018</td> <td></td> <td></td> <td colspan="2">Document number</td> <td></td> <td></td> </tr> </table> | Created | Responsible | Released | Version | Revision | Sheet | Page | Feichtner | | | D1256768-00-A-01 | | 1 | 1 | 11.06.2018 | | | Document number | | | |
| Created | Responsible | Released | Version | Revision | Sheet | Page | | | | | | | | | | | | | | | | |
| Feichtner | | | D1256768-00-A-01 | | 1 | 1 | | | | | | | | | | | | | | | | |
| 11.06.2018 | | | Document number | | | | | | | | | | | | | | | | | | | |

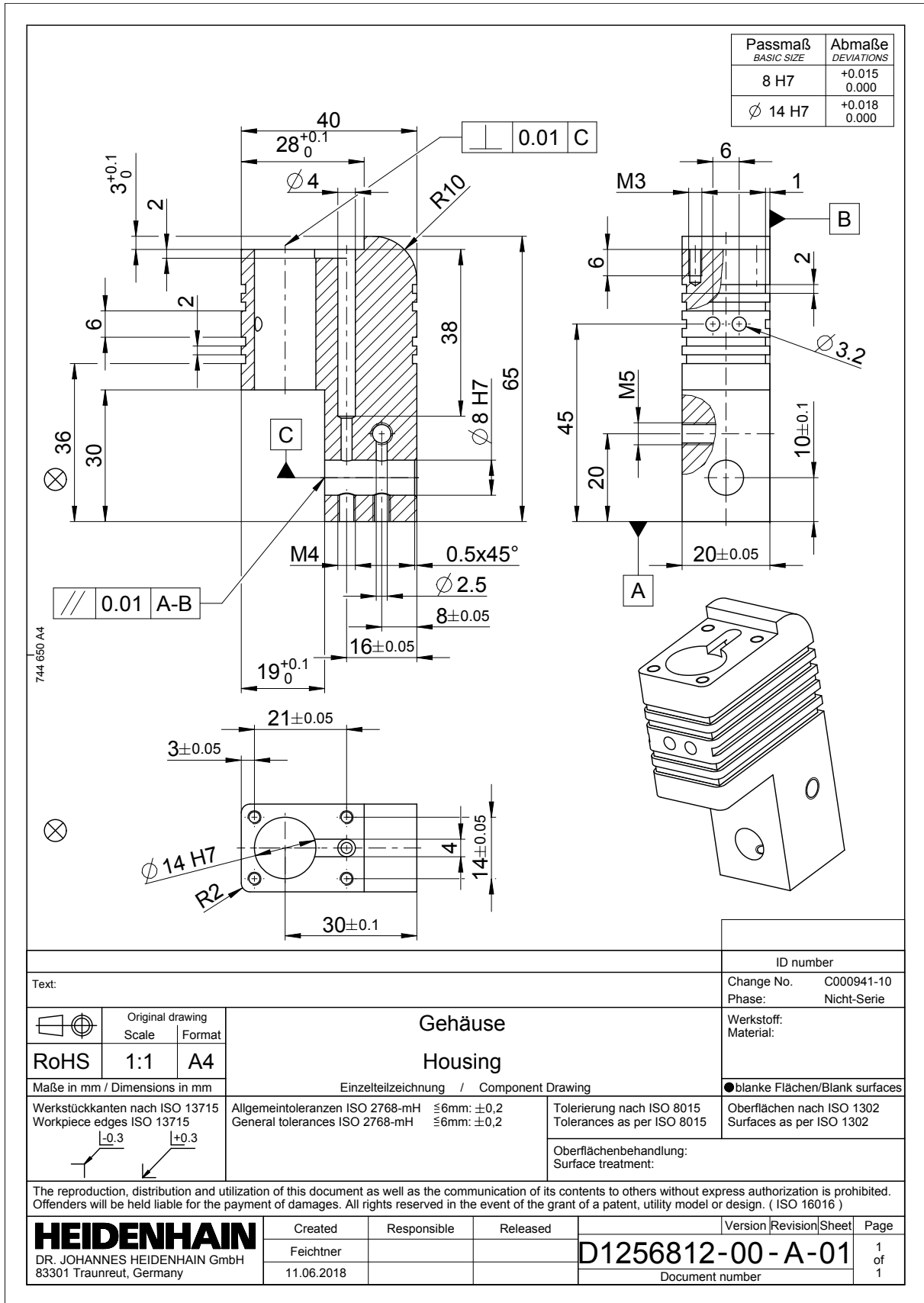


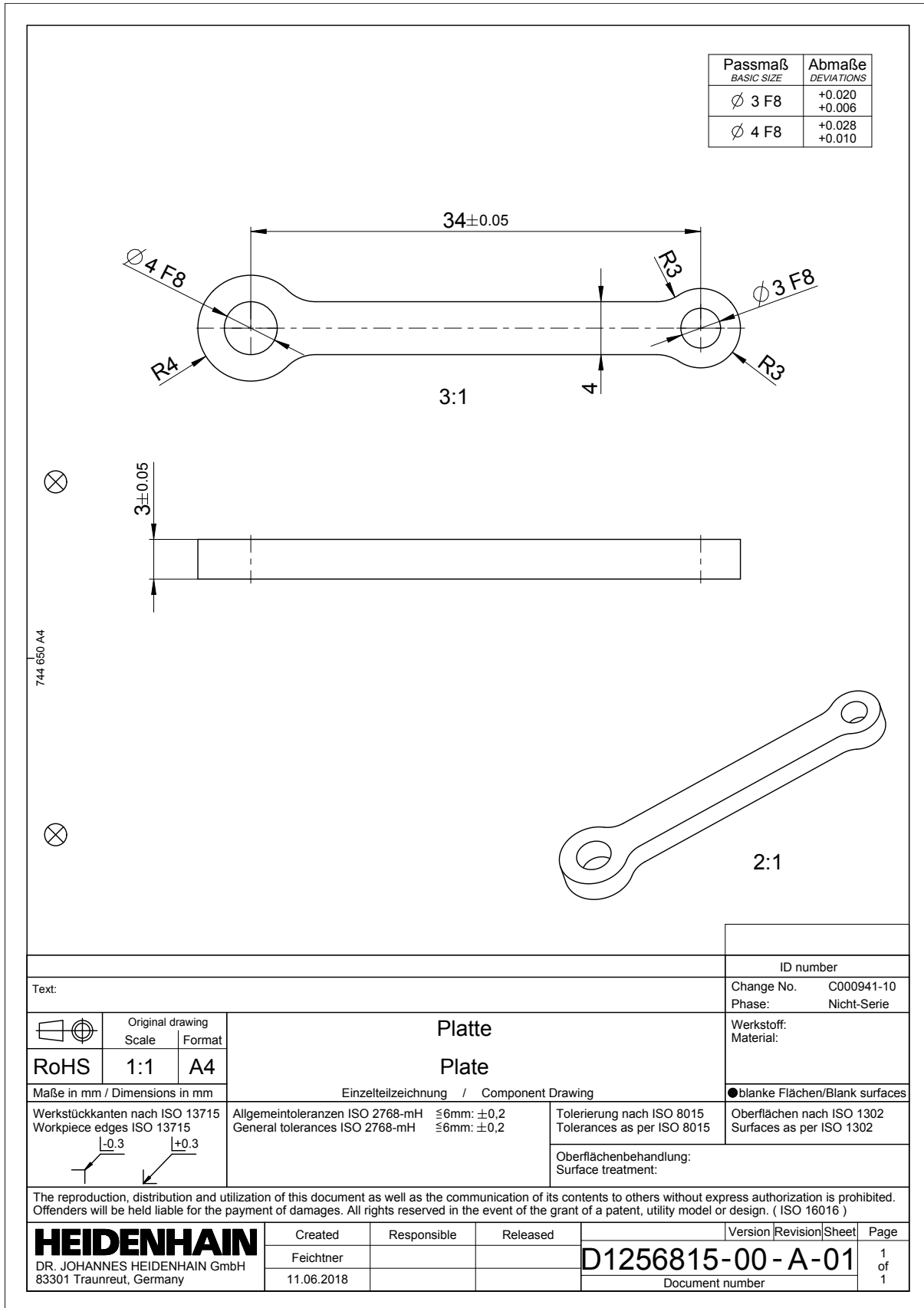






| | | | |
|---|---|---|---|
| Text: | | ID number | |
| Change No. C000941-10 | | Phase: Nicht-Serie | |
| Werkstoff: Material: | | ●blanke Flächen/Blank surfaces | |
| | Original drawing Scale: 1:1 Format: A4 | Platte Plate | |
| Maße in mm / Dimensions in mm | | Einzelteilzeichnung / Component Drawing | |
| Werkstückkanten nach ISO 13715 Workpiece edges ISO 13715 | Allgemeintoleranzen ISO 2768-mH ≤6mm: ±0,2 General tolerances ISO 2768-mH ≤6mm: ±0,2 | Tolerierung nach ISO 8015 Tolerances as per ISO 8015 | Oberflächen nach ISO 1302 Surfaces as per ISO 1302 |
| | | Oberflächenbehandlung: Surface treatment: | |
| The reproduction, distribution and utilization of this document as well as the communication of its contents to others without express authorization is prohibited. Offenders will be held liable for the payment of damages. All rights reserved in the event of the grant of a patent, utility model or design. (ISO 16016) | | | |
| HEIDENHAIN DR. JOHANNES HEIDENHAIN GmbH 83301 Traunreut, Germany | Created | Responsible | Released |
| | Feichtner 11.06.2018 | | |
| | | Version Revision Sheet Page D1256809-00 - A-01 1 of 1 | |
| | | Document number | |





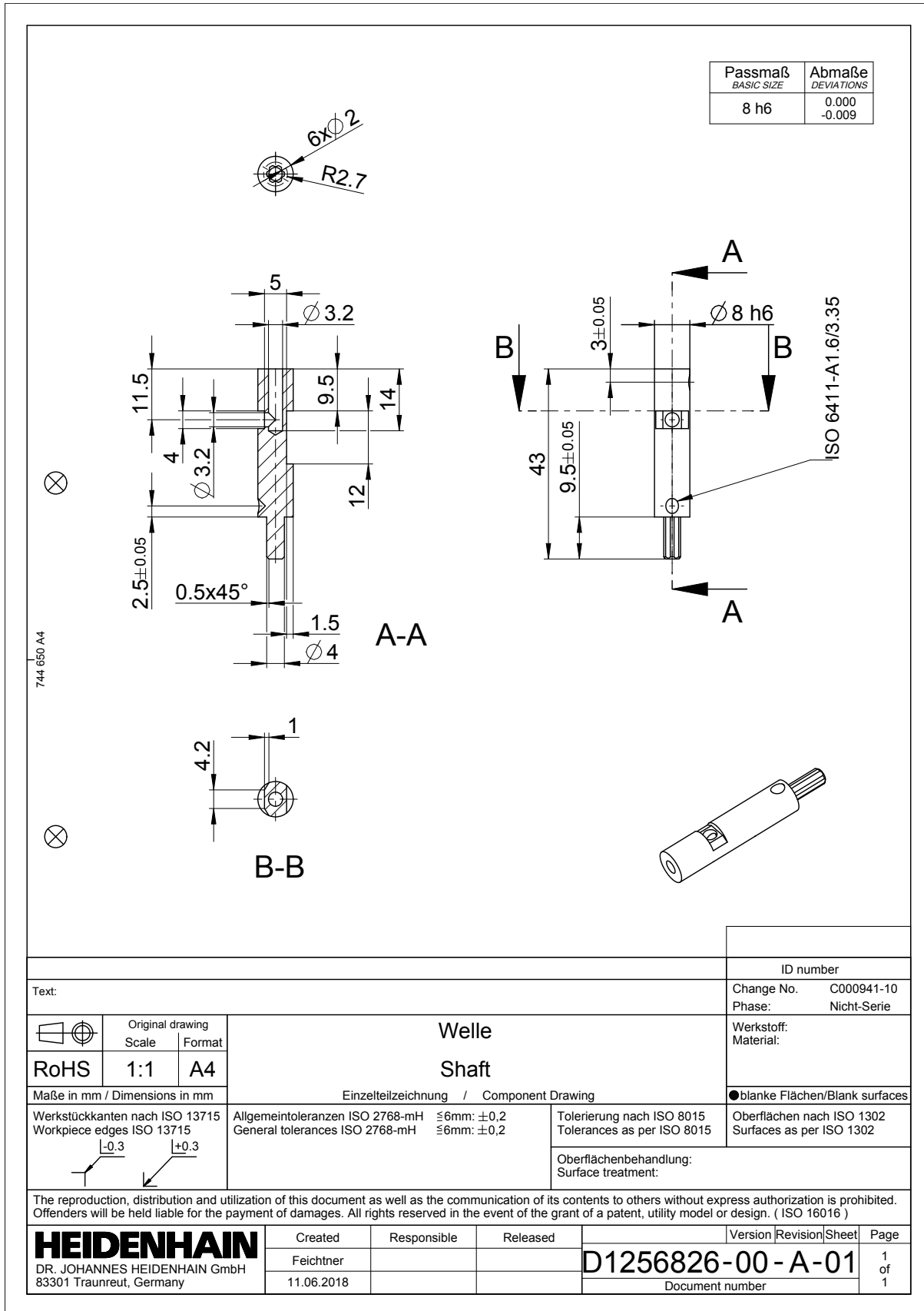
| Passmaß BASIC SIZE | Abmaße DEVIATIONS |
|-----------------------|----------------------|
| 8 H7 | +0.015 0.000 |

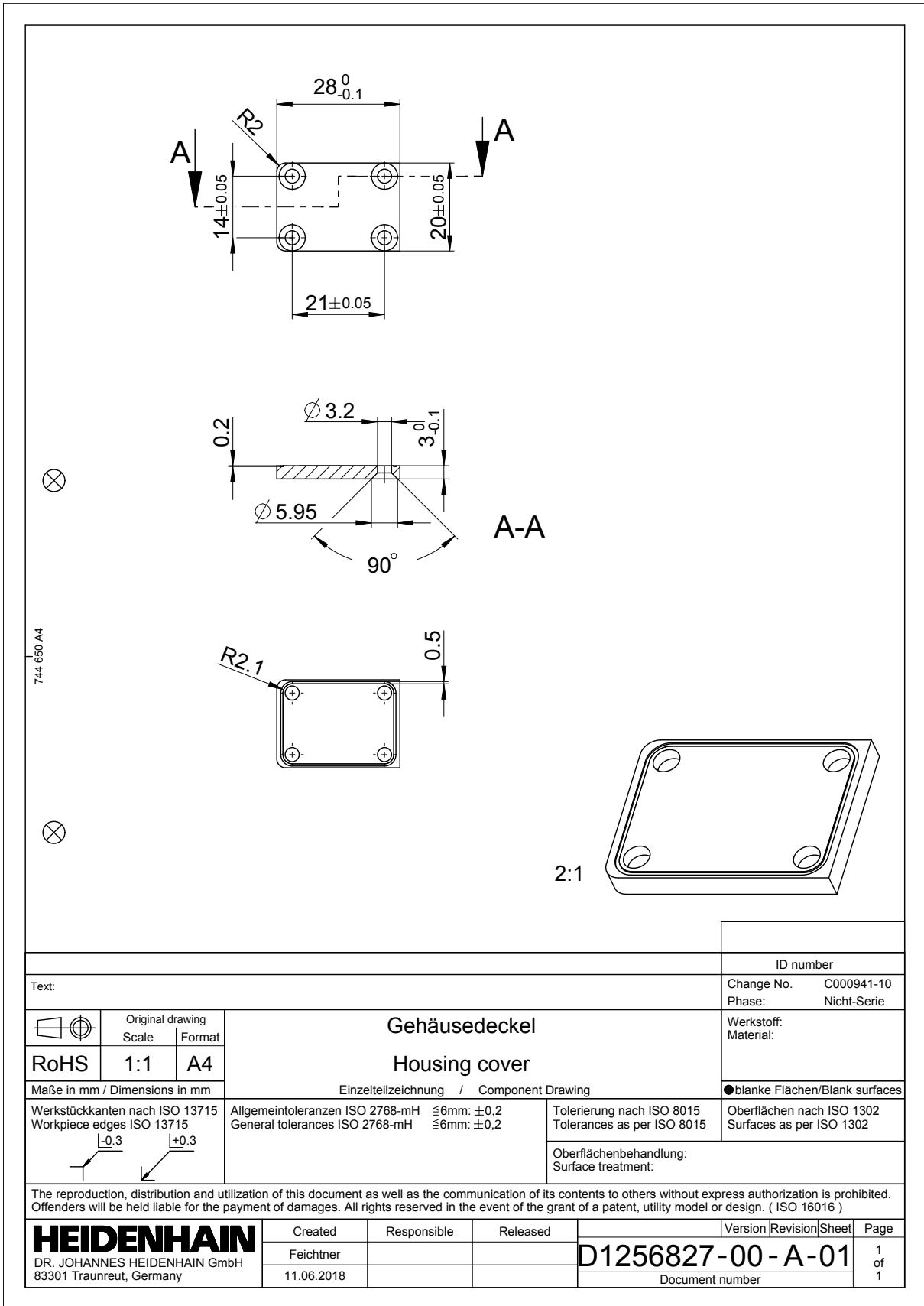
744 650 A4

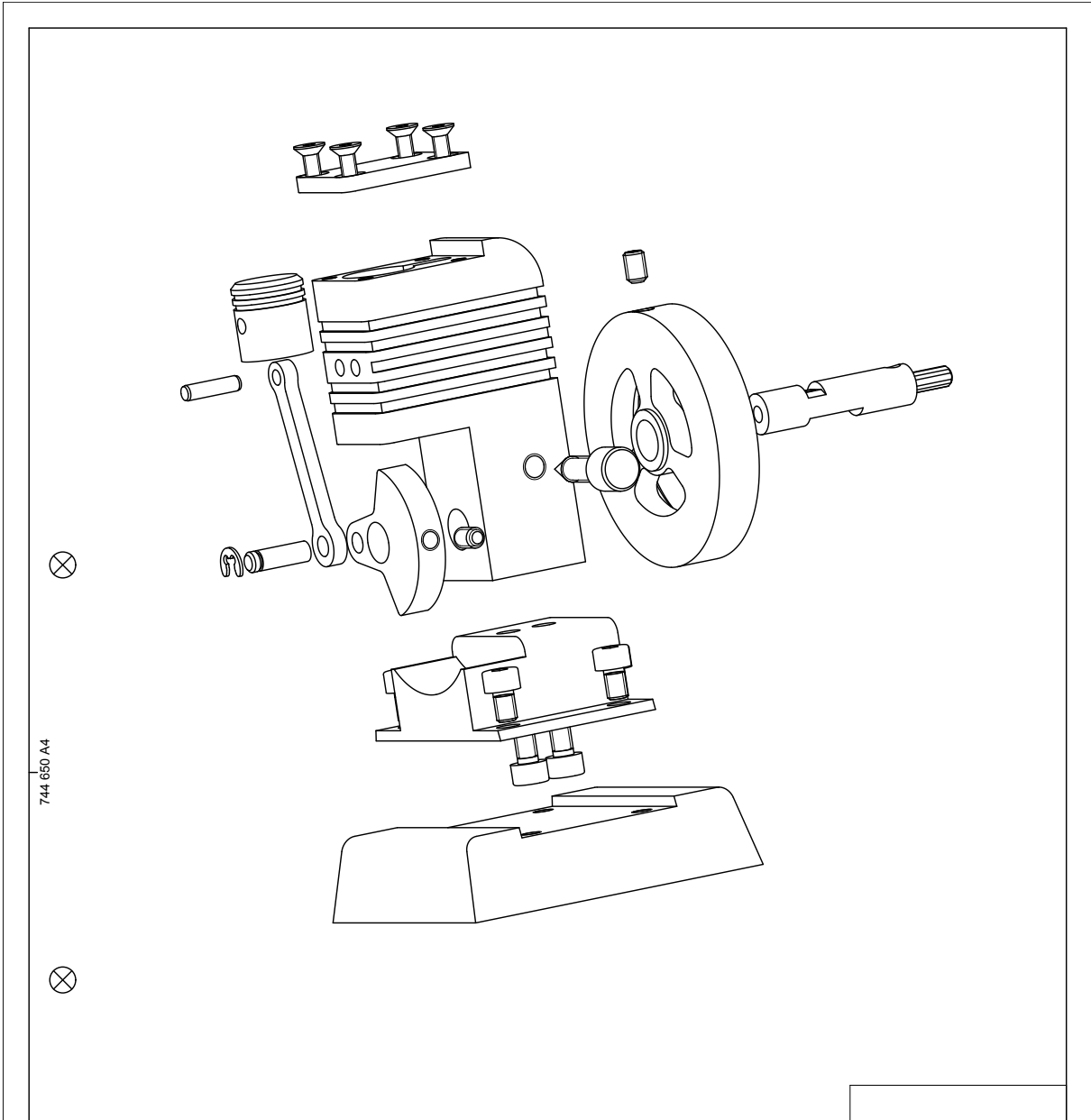
A-A

1:2

| | | | |
|---|--|---|---------------------|
| Text: | | ID number | |
| | | Change No. C000941-10 | |
| | | Phase: Nicht-Serie | |
| | | Werkstoff: Material: | |
| | | ●blanke Flächen/Blank surfaces | |
| Werkstückkanten nach ISO 13715 Workpiece edges ISO 13715 | | Allgemeintoleranzen ISO 2768-mH ≤6mm: ±0,2 General tolerances ISO 2768-mH ≤6mm: ±0,2 | |
| Maße in mm / Dimensions in mm | | Einzelteilzeichnung / Component Drawing | |
| Tolerierung nach ISO 8015 Tolerances as per ISO 8015 | | Oberflächen nach ISO 1302 Surfaces as per ISO 1302 | |
| Oberflächenbehandlung: Surface treatment: | | | |
| The reproduction, distribution and utilization of this document as well as the communication of its contents to others without express authorization is prohibited. Offenders will be held liable for the payment of damages. All rights reserved in the event of the grant of a patent, utility model or design. (ISO 16016) | | | |
| HEIDENHAIN DR. JOHANNES HEIDENHAIN GmbH 83301 Traunreut, Germany | | Created Feichtner 11.06.2018 | Responsible |
| Version Revision Sheet Page | | Released D1256823-00-A-01 Document number | |
| | | 1 of 1 | 1 |







744 650 A4

| | | | |
|---|--|--|---|
| Text: | | ID number | |
| | | Change No. C000941-10 | Phase: Nicht-Serie |
| | Original drawing Scale 1:1 Format A4 | Motor motor | |
| RoHS | | | |
| Maße in mm / Dimensions in mm | | Einzelteilzeichnung / Component Drawing | |
| Werkstückkanten nach ISO 13715 Workpiece edges ISO 13715 | | Allgmeintoleranzen ISO 2768-mH $\leq 6\text{mm}$: $\pm 0,2$ General tolerances ISO 2768-mH $\leq 6\text{mm}$: $\pm 0,2$ | Tolerierung nach ISO 8015 Tolerances as per ISO 8015 Oberflächenbehandlung: Surface treatment: |
| | | ●blanke Flächen/Blank surfaces | |
| The reproduction, distribution and utilization of this document as well as the communication of its contents to others without express authorization is prohibited. Offenders will be held liable for the payment of damages. All rights reserved in the event of the grant of a patent, utility model or design. (ISO 16016) | | | |
| HEIDENHAIN DR. JOHANNES HEIDENHAIN GmbH 83301 Traunreut, Germany | Created | Responsible | Released |
| | Feichtner 18.06.2018 | | |
| | | Version Revision Sheet Page D1256856-00-A-01 1 1 Document number | |

